

Greenway
Health™

Now that's
better.™

Why is an EHR Checklist Important?

Practices strive to optimize their operations and workflows so physicians can focus on what is most important – *providing best patient care*.

Achieving this goal requires recognizing that **electronic health record (EHR) systems are not one-size-fits-all** solutions. Each practice possesses unique workflows, structures, and specific needs, necessitating tailored EHR functionalities.

What might work seamlessly for one practice may prove inadequate for another.



With an overwhelming array of EHR solutions on the market, **the task of finding the perfect fit can be daunting and time consuming.**



**▶ Choosing the Perfect EHR Solution
for Independent Healthcare Providers**

An Essential HIT Vendor Evaluation Checklist

Greenway
Health™

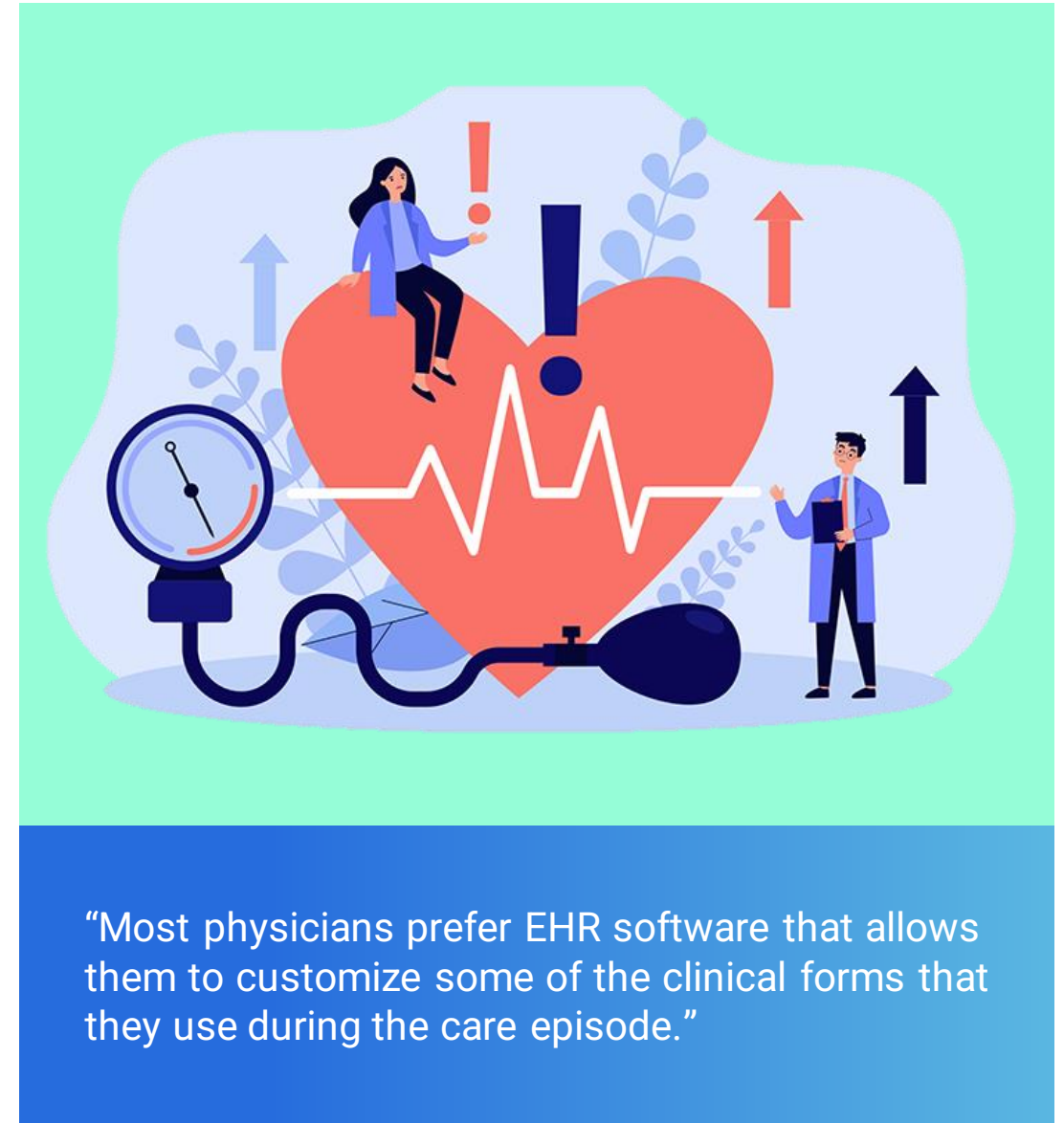
Fun Fact

According to the healthcare technology news site, [SearchHealthIT](#), most providers prefer a solution that is:

- ✓ **Customizable**
- ✓ **User-friendly**
- ✓ **Certified***

** by the Office of the National Coordinator for Health Information Technology (ONC).*

Their EHR evaluation checklists often include mobile access, workflow automation, document management, and more.



“Most physicians prefer EHR software that allows them to customize some of the clinical forms that they use during the care episode.”

TABLE OF CONTENTS:

Although there's no universal way to compare EHRs, we recommend that you use **our checklist to help you evaluate what EHR would best fit your specific needs**, ensuring a seamless and tailored solution for your practice.

1

Does your HIT vendor support your specialty?

2

Is your HIT vendor tenured in ambulatory medicine?

3

Does your HIT vendor conduct discovery sessions with clinician input?

4

Does your HIT vendor have a value-focused roadmap aligning with your unique practice needs?

5

Does the vendor offer reliable support?

6

What are the EHR's reporting capabilities?

7

Is interoperability a priority?

8

Will the HIT vendor guide you through implementation and training?

Does Your HIT Vendor Support Your Specialty?

Whether you specialize in primary care, pediatrics, or another area of medicine, **your practice will require certain functions of its EHR.**

A primary care practice, for example, may see patients with various conditions, whereas an OB-GYN practice has specific tests and exams.



Your EHR must meet the unique needs of your specialty!

You can use this guide to purchase your first EHR, replace an existing one, or consolidate EHRs into one integrated solution.

Find the right HIT Vendor for your billing, reporting, and patient care needs by using this checklist.



Is Your HIT Vendor Tenured in Ambulatory Medicine So They Understand the Unique Needs of an Independent Ambulatory Physician?

Your HIT vendor should offer a range of EHR solutions and services designed to enhance the productivity and effectiveness of independent ambulatory practices.

Their offerings should include features such as:

- Integrated scheduling
- Billing and coding help
- Electronic prescribing
- Customizable templates to streamline documentation



They should also provide tools for patient communication, reporting and analytics, and interoperability with other healthcare systems.

Does Your HIT Vendor Conduct Discovery Sessions, and Weigh Clinician Input When Crafting Their Roadmaps?

It's important that your HIT vendor proactively seeks to listen to your needs and wants.

Consider implementing discovery sessions such as **Functional Advisory Boards** to learn about the day-to-day workflows and pain points straight from the clinicians.



Does Your HIT Vendor Have a Value-Focused Roadmap and That Aligns Feature Releases to Your Unique Ambulatory Needs Practice?

By **actively listening** to their customers, HIT vendors can prioritize feature releases that directly address the needs of ambulatory medicine providers.

This approach ensures that the technology solutions deliver a design of enhanced efficiency, improved patient care, and alignment to the unique challenges of ambulatory medicine.



Greenway Health's client-focused work led them to be awarded **Best in KLAS**.



Does Your Vendor Offer Reliable Support?

Make sure your HIT partner has a support staff in place to answer your questions and keep you moving. Greenway's **Client Support Team** provides quick answers to EHR questions, along with ongoing support.



Your EHR should offer an **Enhancing Experience:**

- A concerted effort to reduce the burden on HER users to perform work.
- Allow providers to spend more time with their patients and save time completing EHR Tasks.

What are the EHR's Reporting Capabilities?

As part of this effort, the ONC maintains standards for health information technology.

A solution must meet standards, implementation specifications, and certification criteria to be ONC Health IT-certified – and encouraged or required for government programs.

Greenway's solutions are 2015 Cures ONC Health IT-certified.



Documenting and reporting data for value-based government incentive programs should be possible with your EHR.

Is Interoperability a Priority?

Is the EHR capable of sharing information with different EHR systems, and is interoperability a priority for the vendor?

Greenway, for example, is **part of the Commonwell Health Alliance**, a nonprofit dedicated to a vendor-neutral platform for health data exchange.



Will the HIT Vendor Guide You Through Implementation and Training?

Implementing a new EHR will require attention and resources, but it shouldn't be an ordeal. Ideally, your vendor will provide foundational training, ongoing communication, and client support.

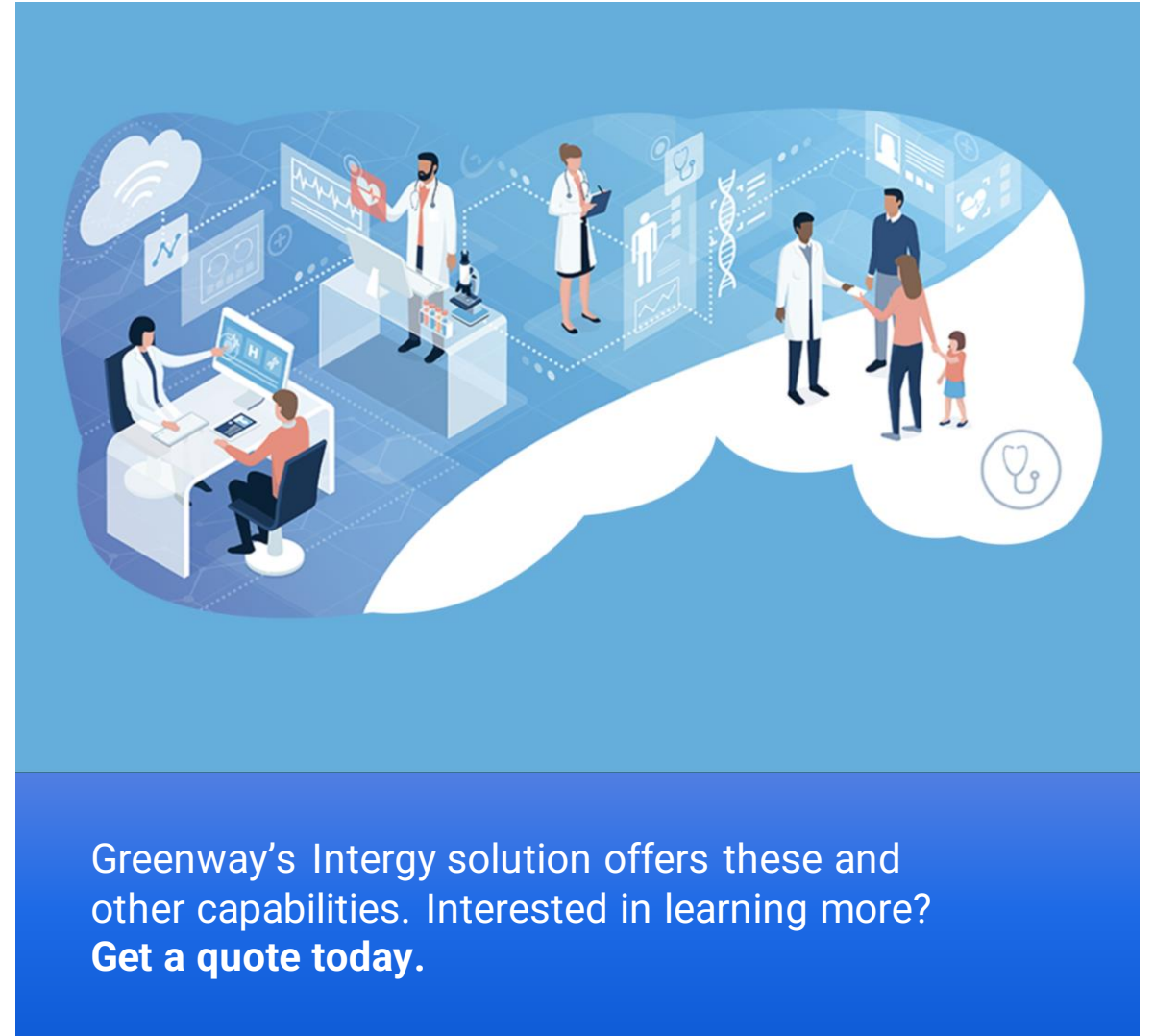


To help shorten the learning curve, Greenway Health offers **Greenway Go-Live**, a personalized approach to implementation that provides access to an onboarding team for the first 90 days after a practice goes live.

Other Considerations

Here are a few added EHR evaluation checklist items worth considering:

- Clinical alerts
- Data analytics
- Electronic prescribing
- Integrated billing
- Template libraries
- Patient portals
- Security protocols
- Simplified scheduling
- Speech-to-text capabilities



Greenway's Intergy solution offers these and other capabilities. Interested in learning more?
Get a quote today.



Resources

The Checklist

- Does your HIT vendor support your specialty?
- Is your HIT vendor tenured in ambulatory medicine, and understand the unique needs of an independent ambulatory physician?
- Does your HIT vendor conduct discovery sessions, and weigh clinician input when crafting their roadmaps?
- Does your HIT vendor have value-focused roadmap that aligns feature releases to your unique ambulatory practice?
- What are the EHR's reporting capabilities?
- Does the vendor offer reliable support?
- Is interoperability a priority?
- Will the HIT vendor guide you through implementation and training?

Greenway
Health™

Now that's
better.™